

The Stonebridge

The Villas of Hillcrest Country Estates



FEATURES

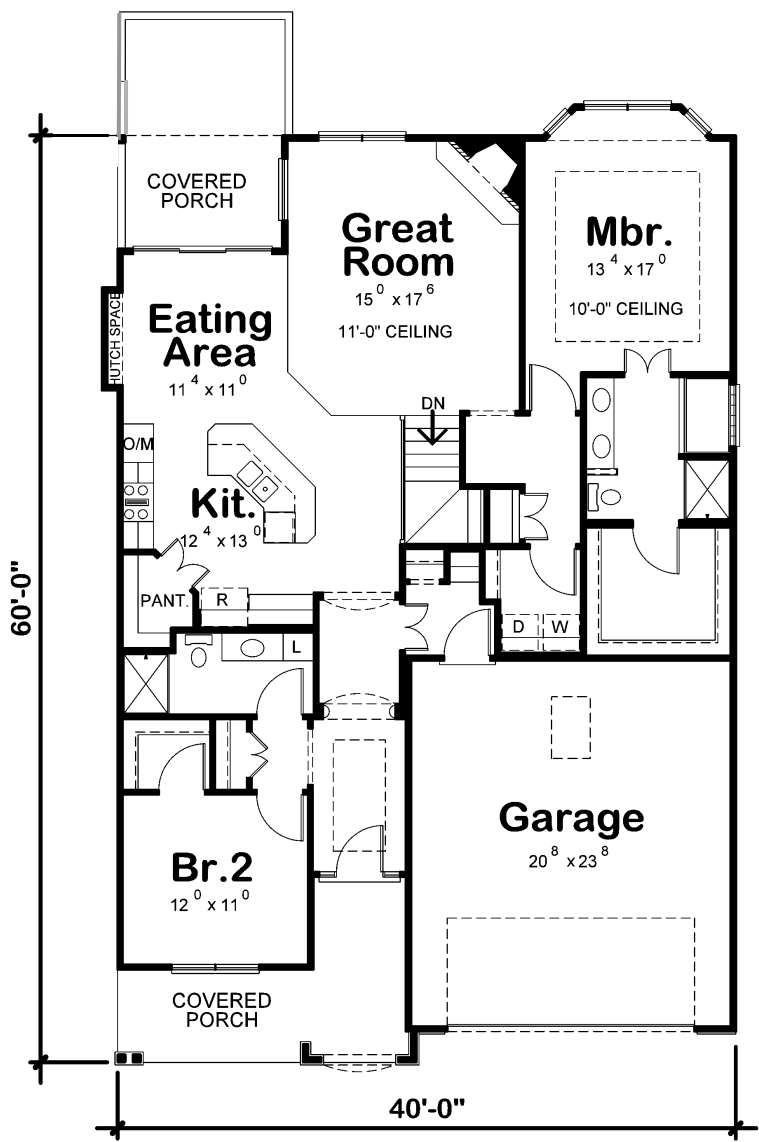
- 1545 or 1648 Square Feet on the Main Level
- 2 Bedrooms
- 2 Bathrooms
- Master Bedroom with Bay Window
- Walk-in Closet
- Whirlpool Tub
- Zero Entry Shower
- Spacious Kitchen w/ Pantry
- Maple Cabinets
- Granite Counter Tops
- Stainless Steel Kitchen Appliances
- Wood Floors in Kitchen & Entry

- Great Room with 11 foot or Cathedral Ceilings
- Gas Fireplace / Ceiling Fans
- High Efficiency Furnace
- Two Car Garage
- Zero Entry at Front Entrance & Garage
- Laundry Room
- Covered Front & Rear Porches
- Full basement - Walk out Available on Selected Lots
- Finished Basement Available
- Beautifully Landscaped

We reserve the exclusive right to modify standard features, floor plans, specifications and architectural details without notice. All room dimensions are approximate and may vary from those shown. Finished square footage calculations for these houses were made based on the exterior plan dimensions only, and may vary from the finished square footage of the house as built. This Standard Features list supersedes all previously issued lists of an earlier date. Oral representations cannot be relied upon. There are certain features depicted that may not be included as a standard feature in some homes. All renderings are for conceptual presentation only. Some floor plans may be reversed (mirror image).

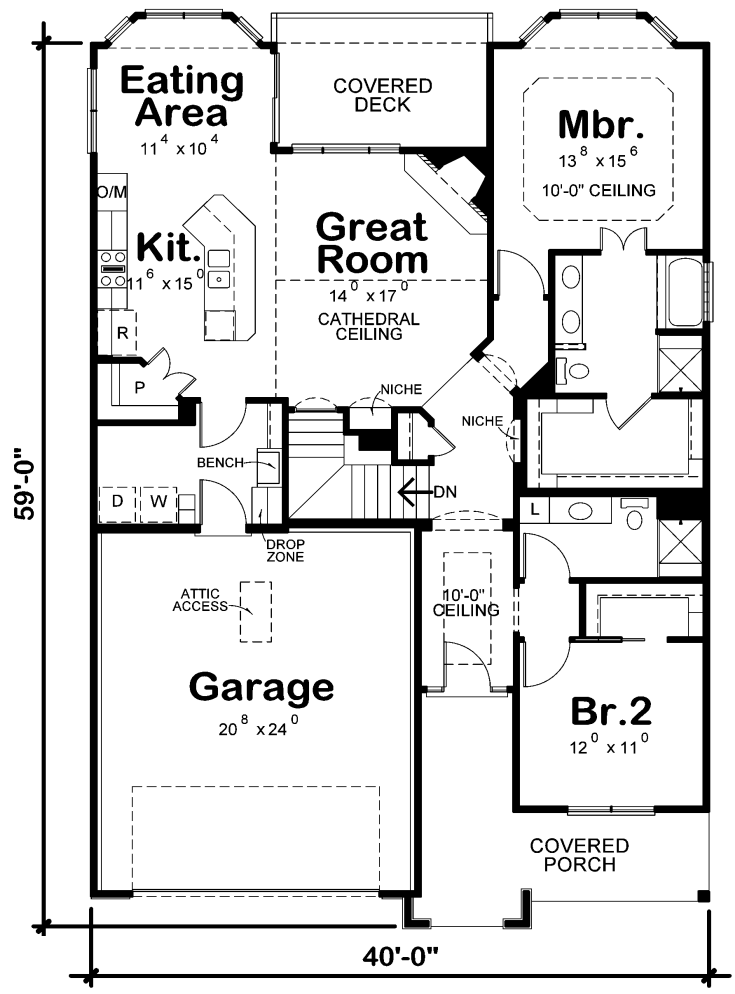
The Stonebridge Floor Plans

Hillcrest
Country Estates



Plan A

1648 Square Feet



Plan B

1545 Square Feet

Model Home is located at 6227 Grand Lodge Avenue in Papillion (just north of Hwy 370)
402-885-7007
 Hillcrest Country Estates • 6082 Grand Lodge Avenue • Papillion, NE 68133
 Locally Owned and Operated