

# The Castlerock

## The Villas of Hillcrest Country Estates



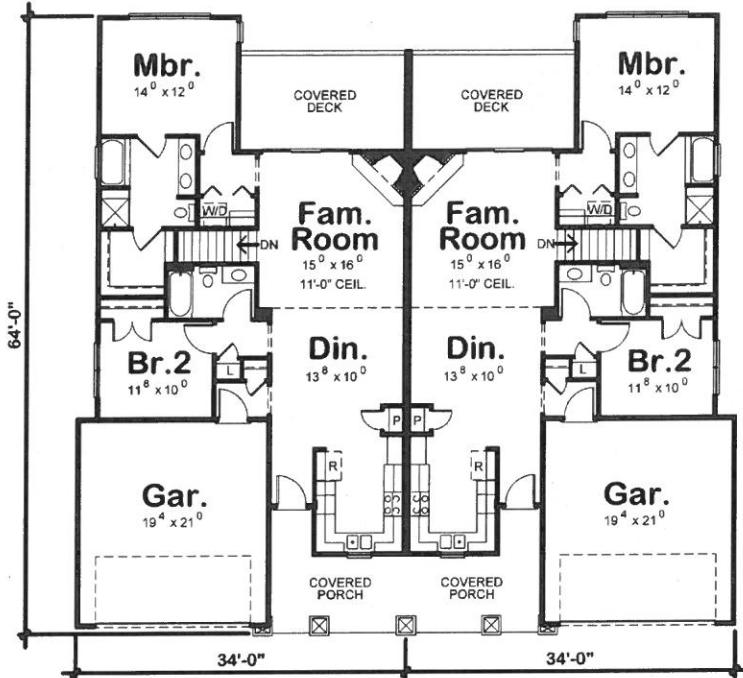
### FEATURES

- 1279 or 1433 Square Feet on the Main Level
- 2 Bedrooms
- 2 Bathrooms
- Master Bedroom with Walk-in Closet
- Whirlpool Tub
- Zero Entry Shower
- Spacious Kitchen
- Maple Cabinets
- Granite Counter Tops
- Stainless Steel Kitchen Appliances
- Wood Floors in Kitchen & Entry

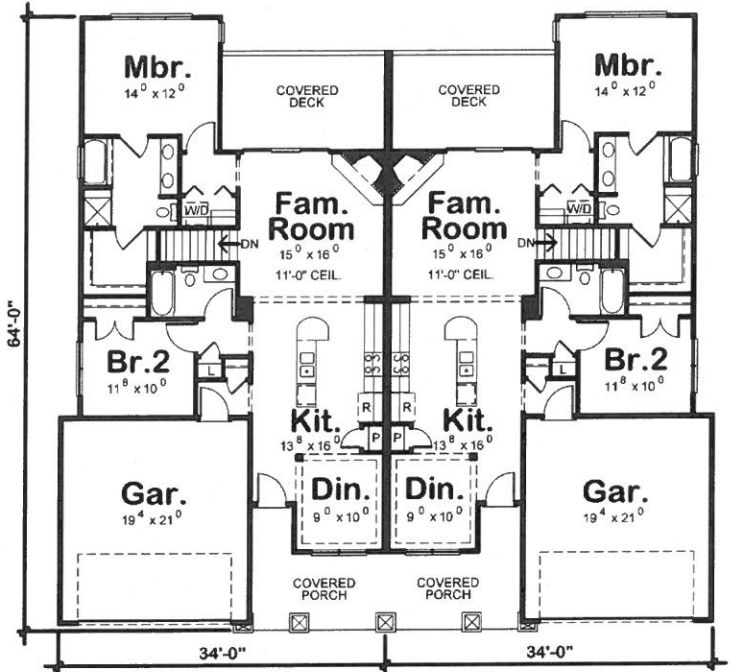
- Great Room with 11 Foot Ceiling
- Gas Fireplace
- Ceiling Fans
- Two Car Garage
- Zero Entry at Front Entrance & Garage
- High Efficiency Furnace
- Covered Front & Rear Porches
- Full Basement - Walk Out Available on Selected Lots
- Finished Basement Available
- Beautifully Landscaped

We reserve the exclusive right to modify standard features, floor plans, specifications and architectural details without notice. All room dimensions are approximate and may vary from those shown. Finished square footage calculations for these houses were made based on the exterior plan dimensions only, and may vary from the finished square footage of the house as built. This Standard Features list supersedes all previously issued lists of an earlier date. Oral representations cannot be relied upon. There are certain features depicted that may not be included as a standard feature in some homes. All renderings are for conceptual presentation only. Some floor plans may be reversed (mirror image).

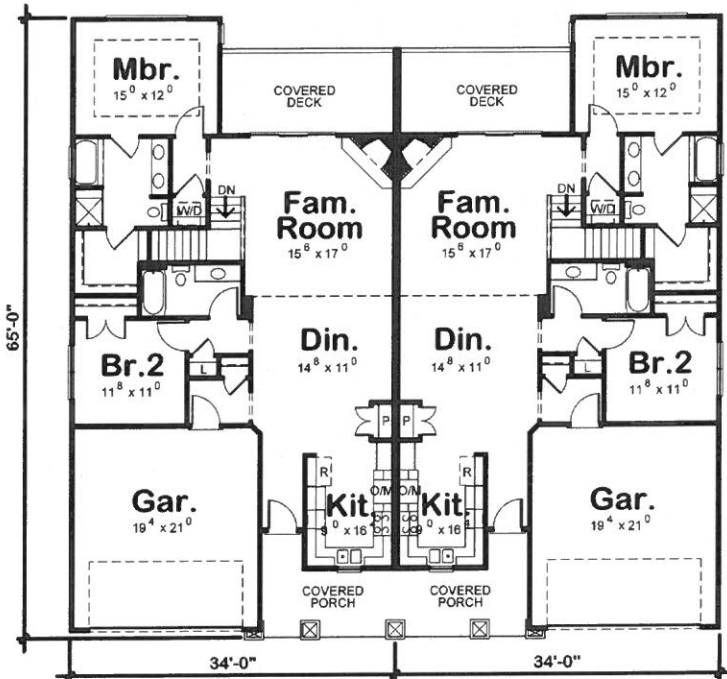
# The Castlerock Floor Plans



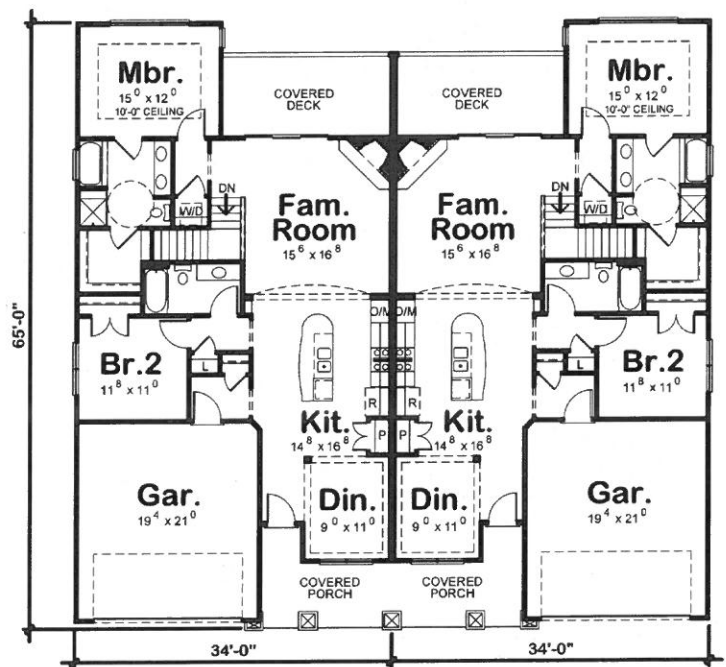
**Plan C**  
1279 Square Feet



**Plan D**  
1279 Square Feet



**Plan E**  
1433 Square Feet



**Plan F**  
1433 Square feet

Model Home is located at 6227 Grand Lodge Avenue in Papillion (just north of Hwy 370)

**402-885-7007**

Hillcrest Country Estates • 6082 Grand Lodge Avenue • Papillion, NE 68133

Locally Owned and Operated